

KIT-R-FASTEN-SCREW

Rear Panel Screw Kit

Quick Start Guide

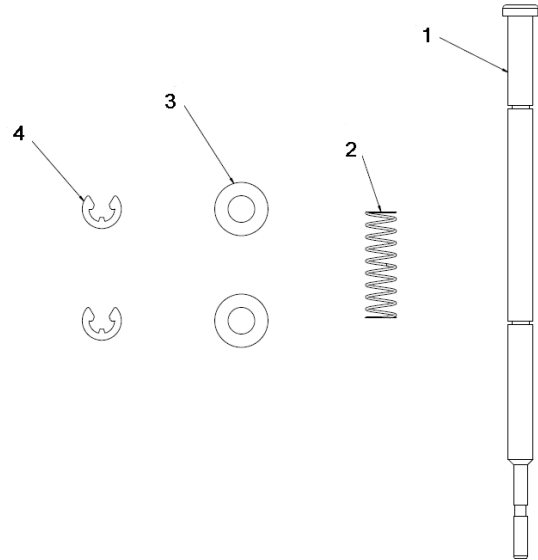
P/N: 6806867A01C JUNE 2022

1 Box Contents

Make sure you receive all items of your shipment:

One KIT-R-FASTEN-SCREW for AXP contains:

- 1 ea. M2.5 x 97.0mm taper screw, #1
- 1 ea. 0.75"L x 0.218" OD spring, #2
- 2 ea. #8 narrow flat washer, #3
- 2 ea. Heatsink captive clip, #4



One printed copy of *Quick Start Guide* (this document)

One printed copy of Safety Notes Summary



When installing or servicing the system or accessories, strictly observe the safety precautions in the *Safety Notes Summary*. Ignoring these instructions can void the system warranty and cause personal injury or property damage.

PENGUIN[™]
SOLUTIONS

2 ESD

Use ESD protection Use either a properly grounded ESD wrist strap or make sure that you are working in an ESD-safe environment.



Connect to the ESD connector at the front or the rear of the system.

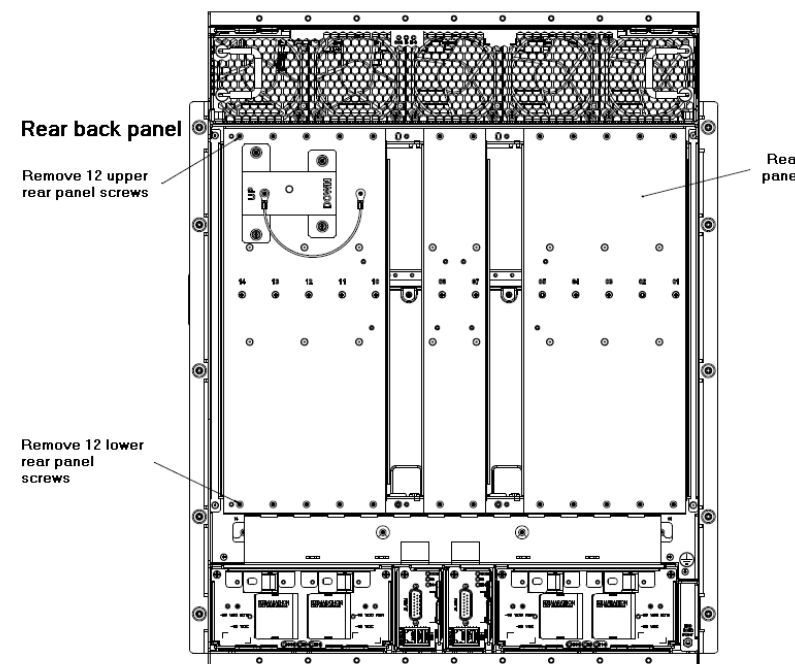
3 Site preparation

For information on the environmental requirements, refer to the AXP1440 Installation and Use manual (6806800U21).

Operating temperatures refer to the temperature of the air circulating at the air intake of the system and not to component temperatures.

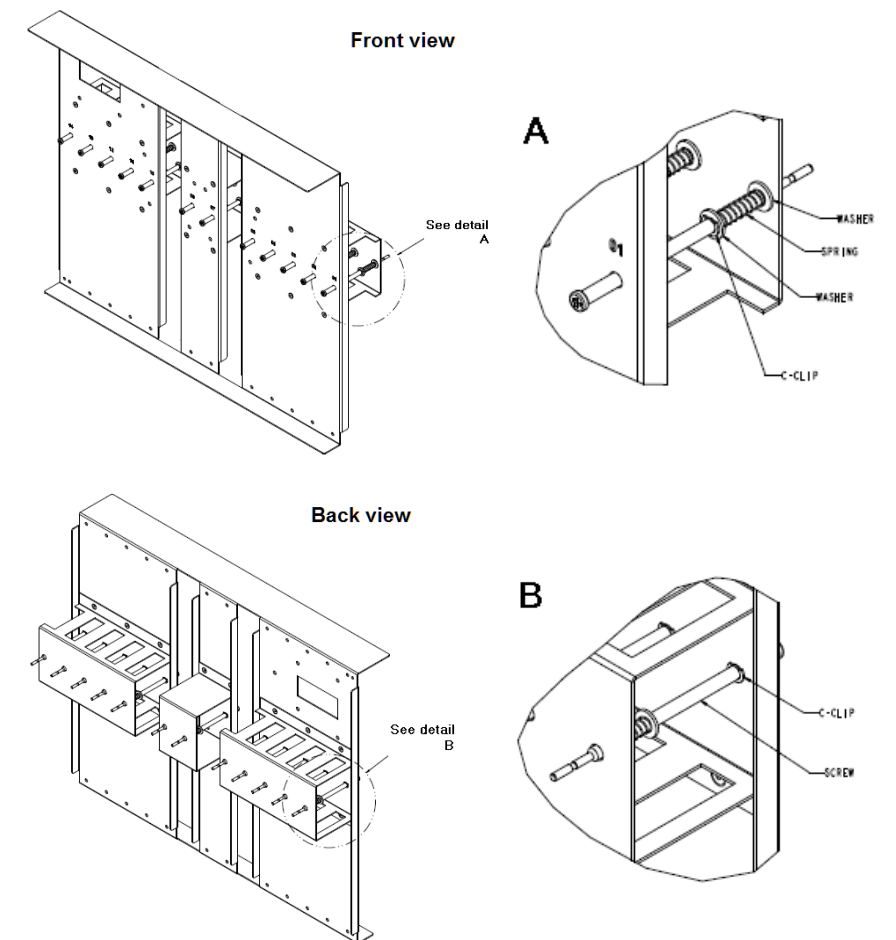
4 Replace a screw assembly

The chassis rear back panel must be removed for access to the screw assembly. You need a #1 and #2 Phillips screwdriver and a needle nose pliers for this task. The replacement of a damaged screw assembly is performed without power applied to the system.



1. Remove power to the system.
2. Unfasten all board locking screws using a #2 Phillips screwdriver. Make sure that all rear boards are removed from the chassis.

3. Remove the 24 screws that affix the rear back panel to the chassis using a #1 Phillips screwdriver then remove the rear back panel from the chassis.
4. Locate the screw assembly you are replacing.
5. Using the needle nose pliers, remove the two c-clips from the screw and set aside. Refer to illustrations **A** and **B**.
6. Slide the screw from the screw hole and collect the washers and spring. Set aside any reusable parts.
7. From the front side of the rear panel, insert the replacement screw through the hole far enough to replace the other replacement parts on the screw.
8. Place the parts on the screw in this order: c-clip, c-clip, washer, spring, and washer. Refer to the illustrations **A** and **B** and position these parts as shown.
9. Make sure the screw is securely seated and that the spring action works properly.
10. Reinstall the rear back panel by aligning the rear panel guide pins to the chassis. Apply a slight upward pressure to the rear panel when fastening the 24 panel screws.
11. Reinstall the 24 screws and fasten to a torque of 3.50 in-lbs.



12. Apply power to the system



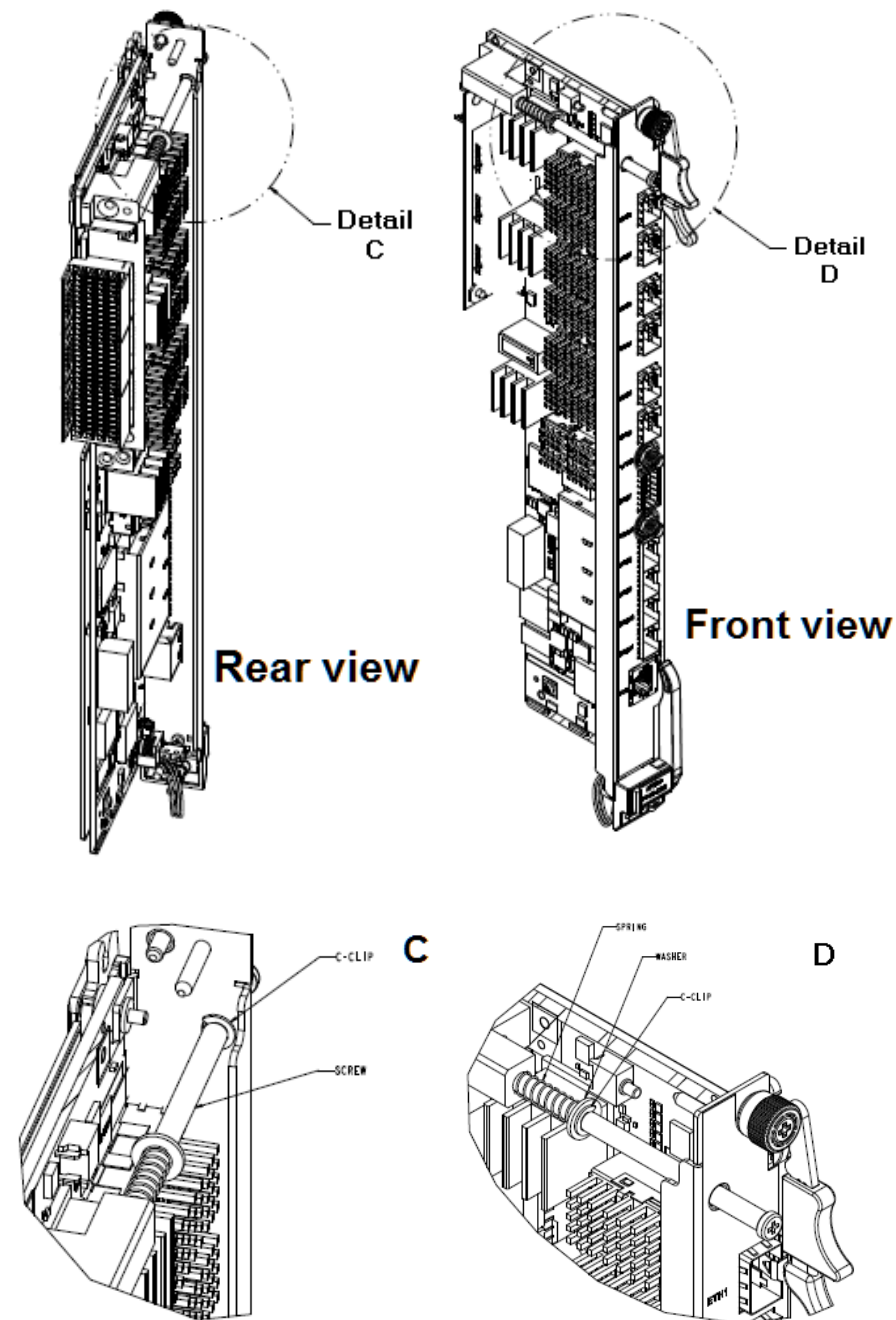
5 Replace the screw on an RTM

This replacement screw kit is also used with the RTM. To replace the screw, follow these steps. You need a #2 Phillips head screwdriver and a needle nose pliers. You do not need to remove power from the system to replace the screw on a RTM board.

1. Unlatch the lower handle from the faceplate by sliding the latch into release position and pull partially outward.
2. Locate and loosen the long screw from the RTM front panel, using a #2 Phillips screwdriver. Refer to *Front view* illustration.
3. Loosen the two thumb screws located next to the RTM ejector handles, see Front View detail.
4. Squeeze the lever and the latch together of upper handle and push the handle fully outward.
5. Remove interface cables from faceplate connectors, if applicable.
6. Remove the RTM from the slot.
7. Using the pliers, remove the c-clip from the screw and set aside. Refer to detail **C** and **D**.
8. Slide the screw from the screw hole making sure to collect the washers and spring. Set aside any reusable parts.
9. From the front side of the rear chassis, insert the replacement screw through the hole far enough to assemble the other replacement parts on the screw.
10. Place the parts on the screw in this order: c-clip, c-clip, washer, and spring. Refer to detail **C** and **D** and position these parts as shown.
11. Make sure the screw is securely seated and that the spring action works properly.

To install the RTM:

1. Make sure the front blade is installed in the same slot prior to installing the RTM.
2. Put the top and bottom handles of the RTM in their outward positions. Do not pull the bottom handle fully out.
3. Align the RTM with the slot guides and insert the RTM and gently slide into the shelf until the RTM connectors engage.
4. Squeeze the lever and latch together to hook the upper handle into the chassis rail recesses.



5. Fully insert the RTM and lock it to the chassis by pressing the two components of the upper handle together and slide the latch of the bottom handle outward.
6. Turn both of the upper and lower handles of the RTM toward the faceplate.
7. Close the lower handle of the front blade in order to power up the payload of both the front blade and the RTM.

8. Tighten the two handle thumbscrews.
9. Tighten the replaced long screw protruding from the RTM front panel using a #2 Phillips head screwdriver to a torque of 2.65 in-lbs.
10. Apply power to the system.

Technical assistance

For technical assistance or to report product damage or shortages, contact your local Penguin Solutions™ sales representative or visit <https://www.penguinsolutions.com/edge/support/>.

Get more information



For more information on the product, see the *AXP1440 Installation and Use* and other related documentation, which can be found by using the Documentation Search at <https://www.penguinsolutions.com/edge/support/>.



Penguin Solutions is a trade name used by SMART Embedded Computing, Inc., a wholly owned subsidiary of SMART Global Holdings, Inc. Penguin Edge is a trademark owned by Penguin Computing, Inc., a wholly owned subsidiary of SMART Global Holdings, Inc. All other logos, trade names, and trademarks are the property of their respective owners. These materials are provided as a service to our customers and may be used for informational purposes only. For full legal terms and conditions, please visit www.penguinsolutions.com/edge/legal/. ©2022 SMART Embedded Computing, Inc.